



Berkey[®]
WATER SYSTEMS

Instructions for **Black Berkey**[®] Elements

Parts List Parts shown for illustration only and are not to scale.



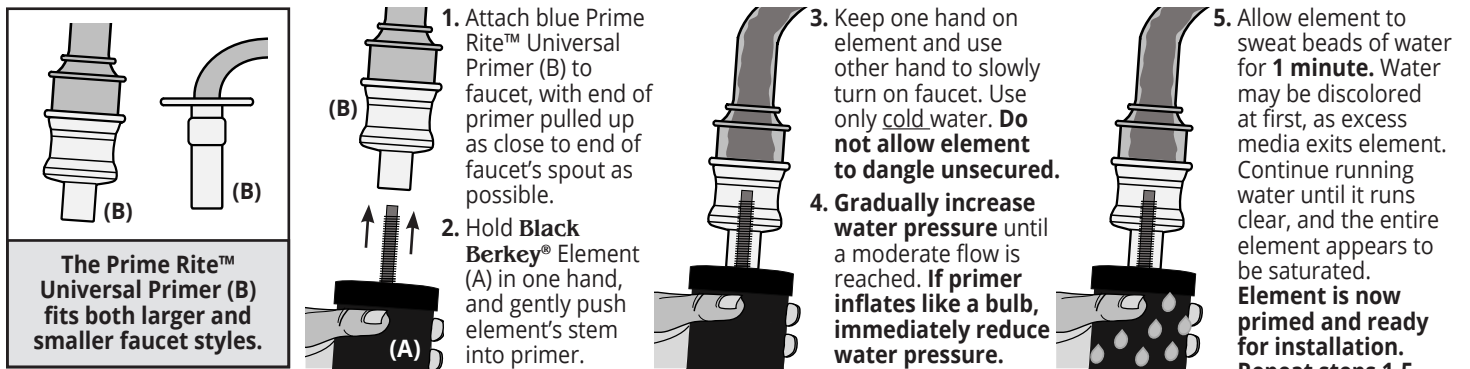
1. Prime Your **Black Berkey**[®] Elements (3 Methods Shown Below)

Priming uses water to displace air out of the elements' pores, ensuring that water can flow freely. **Elements will not operate properly if they are not primed.** We recommend setting up your system on a countertop or other waterproof surface. If process dust is present, wipe it off with a Scotch-Brite[®] pad under cold running water.

Before You Get Started:

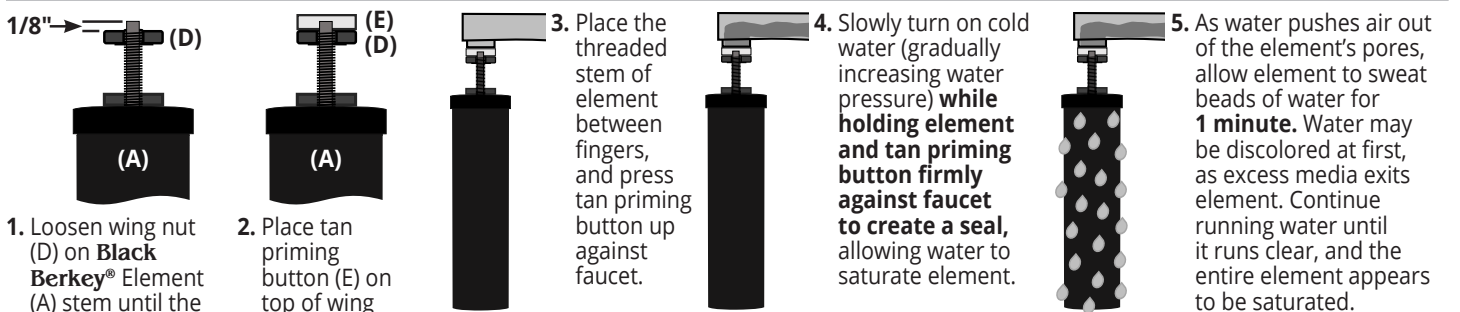
- Wash hands before installing and priming elements to reduce the chances of contaminating the system's components.
- Keep all parts, instructions and original packaging in the event that your elements need to be returned to the manufacturer. Write the installation date in the space provided on the elements' box to serve as a reminder as to when elements need replacement.
- Determine the best priming method based on your faucet's design and where you will be priming the elements.

Priming Method 1: Using the Included Prime Rite[™] Universal Primer



Tip: Your **Black Berkey**[®] Elements will be wet after priming them. We recommend placing your primed elements in a clean bowl or sink while priming and installing your other remaining **Black Berkey**[®] Elements.

Priming Method 2: Traditional Method Using Tan Priming Button



Tip: Your **Black Berkey**[®] Elements will be wet after priming them. We recommend placing your primed elements in a clean bowl or sink while priming and installing your other remaining **Black Berkey**[®] Elements.

The element is now primed and ready for installation. Repeat steps 1-5 for remaining elements.

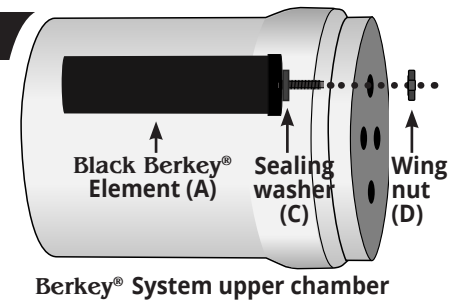
Priming Method 3: Without Pressurized Faucet / Alternative Priming Options

We strongly recommend using the **Berkey Primer**[™] (sold separately), a handheld priming pump that makes the elements easy to prime without the need for faucets or hose connections. **Berkey Primers**[™] are available from Authorized **Berkey**[®] Dealers worldwide.

Black Berkey[®] Elements may also be primed using a bottle of filtered water. Have one person hold the element, with the priming button attached and facing upward. Have a second person press the mouth of the bottled water against the priming button and squeeze until water is forced through entire exterior wall of element and it begins to sweat beads of water.

2. Install Primed Black Berkey® Elements In Your System

1. Remove wing nut from threaded stem while leaving sealing washer on element.
2. Place threaded stem, with sealing washer attached, into the hole in the interior base of upper chamber.
3. Secure element in the base of the chamber by screwing wing nut onto threaded mount until hand-tight. **Caution: hand tighten only. Over-tightening wing nut can strip the nut's threads, which could cause the system to leak.** Repeat these 3 steps for remaining elements.
4. With elements (and blocking plugs, if needed) in place, carefully place upper chamber onto lower chamber. Your system is ready to use.



3. Assembly Verification* (Red Food Coloring Test)

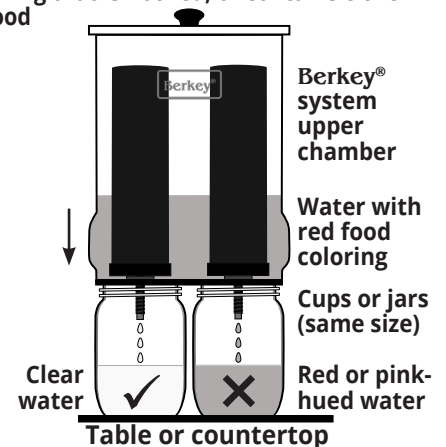
This simple test verifies that your system has been assembled correctly, and that there are no internal leaks in your system. We recommend this test be done after the first assembly of this system, after removal or replacement of **Black Berkey® Elements**, or the first use after drying and storing the elements for an extended period of time. **Ensure that you do not have Berkey PF-2® Fluoride and Arsenic Reduction Elements installed in the system when performing this test.**

1. Add up to 1/8 teaspoon (10 drops) of artificial **red** food coloring (must be red) for every gallon that your **Berkey®** System can hold into the upper chamber. We recommend McCormick's red food coloring or any artificial food coloring. Acceptable food color ingredients include water, propylene glycol, FD&C Red 40 and FD&C Red 3, and propylparaben. **Avoid using food coloring that is not red, or contains citric acid, sodium benzoate or natural ingredients such as beet juice, turmeric, etc. Using organic food colorings will result in a false failed test (stating that your system is not sealed correctly).**
2. Place a cup under spigot and drain water. If dispensed water does not have a red or pink hue, this indicates that the elements are sealed and system has been assembled correctly.

***Note: This test is meant to confirm that the system was assembled as intended.**

If water drained from system has a red or pink hue during the assembly verification test, repeat the procedure again in this manner to determine the source of the leak:

1. Place the upper system chamber only (with **Black Berkey®** Elements installed) on top of same-sized cups or jars, each positioned so that an element can drip water into it. This will help you identify which blocking plug or element may be leaking.
2. Fill upper chamber with water and red food coloring as directed above.
3. Allow system to filter water. Check the color of water expelled from the elements.
If water color is clear, your system is ready to use. If red dye is still present, reinstall the element(s) or blocking plug(s) where leaking occurs and re-run test.
4. If system continues to fail the test, contact our Customer Service department for assistance.



Black Berkey® Elements Precautions and Storage

Use of softened water or salt water can clog the filter's pores and will void your warranty.

Never allow wet Black Berkey® Elements to freeze. Exposure to freezing temperatures can expand the water into ice, which may damage the elements and cause them to crack or break. Allowing elements to freeze will void your warranty.

If you are going to be leaving the system unattended for 4-15 days and want to reduce the necessity of re-priming the elements, remove the elements from your system and place them in a sealable plastic bag (gallon-size or larger) while elements are still damp (this allows the elements to stay wet, making priming unnecessary). Then, place the elements in your refrigerator where they will not freeze. When ready, thoroughly rinse elements under cold water, then reinstall them in your system.

For longer-term storage, we recommend completely drying the elements first. Ensure they are bone-dry (zero moisture) before storing them long-term. Shake excess water from elements, then air-dry by leaving them on a windowsill or other sunny location for 1-3 days until completely dry.

Once elements are bone-dry (zero moisture), store them in a sealable plastic bag (gallon-size or larger)—this prevents elements from absorbing odors. When you are ready to re-use your elements, clean them by scrubbing the outside with a stiff brush or a Scotch-Brite® pad under cold running water. Then re-prime the elements before putting them back in your system.

Alternatively, you can use a **Berkey Primer™** (sold separately) which assists in both priming and purging. Purging speeds up the drying process by pushing water out of the element before you place them in the sun or air dry to complete the process. Note: when purging, valves on the **Berkey Primer™** must be reversed.

New Millennium Concepts, Ltd. Limited Warranty

New Millennium Concepts, Ltd. warrants their product against defects in materials or workmanship during ordinary consumer use. This Limited Warranty does not cover product issues caused by any other reason, for the time periods and conditions set forth below when purchased directly from an Authorized **Berkey®** Dealer. New Millennium Concepts, Ltd. shall not be held liable for incidental or consequential damage to personal property from, but not limited to, a defective unit, improper use, abuse, accident, or neglect, etc. It is the customer's responsibility to prevent misuse of the system and to replace parts, when, due to the natural course of wear and tear, they must be replaced. To obtain warranty service, you must provide a dated receipt for the product and may be responsible to pay for any shipping charges incurred to return the product to New Millennium Concepts, Ltd. when required. This warranty will not apply to units which have been used for purposes not intended, which have been altered so as, in the manufacturer's judgment, to adversely affect its performance. This warranty is for the original retail purchaser only, and cannot be transferred. For a period not to exceed the specified warranty coverage from the date of receipt of the product by the original purchaser on the original invoice, New Millennium Concepts, Ltd. will, solely at its discretion, replace said product or component that New Millennium Concepts, Ltd. deems is not functioning properly during the stated warranty period. The laws of the state of Texas, USA will govern any disputes regarding this warranty or claim made. This warranty, which is given expressly in lieu of all warranties, expressed or implied, or merchantability and fitness for a particular purpose, constitutes the only warranty made by New Millennium Concepts, Ltd. This warranty applies only to products manufactured or exclusively distributed by New Millennium Concepts, Ltd. and its Authorized **Berkey®** Dealers, and does not apply to extended warranties offered by some Authorized **Berkey®** Dealers. **Black Berkey® Elements** are covered under a two year limited prorated warranty, calculated in six-month intervals. Warranty period begins from the date of receipt of the product by the original purchaser on the original invoice.

Questions About Installing or Using Your Black Berkey® Elements?

Phone: (888) 803-4438 Monday - Friday 9AM - 5PM CST Holiday hours may vary.